



C L E V E R L I F E



CL-S-GS300A PIR Motion
Sensor (Wi-Fi)



Clever Sense Product
www.cleverlife.com.au

Operating and Installation Instruction

1 Product overview

The CL-S-GS300A motion detector is designed with pyroelectric infrared sensor for real-time detection of human body movement. The use of human body moving state changes, can achieve intelligent lighting or anti-theft alarm as well as other functions, bringing convenience to home life while protecting your family and property. The product has a built-in Wi-Fi wireless communication module, which enables the sensor to be used as an intelligent human movement detector when connected to the Smart Life APP. Its functions will be automatically converted according to different application situations you create within the Smart APP.

When the motion detector is connected to the Smart Life App intelligent system, notifications can be sent to the registered smart device when it detects human movement in the room and also programmed to operate other CLEVER LIFE devices connected to your network. Timely notifications can be sent to the user and/or CLEVER LIFE devices such as lighting, cooling, appliance or power are programmed to operate when motion is detected.

2 Product features

- Automatic digital temperature compensation for both warm and cool environments
- Equipped with universal mounting bracket for ease of installation and ultimate adjustment
- Supports anti-white light function, reducing the probability of unwanted detection
- Standby current as low as 15 μ A providing long battery life
- The use of Wi-Fi wireless communication protocol is safe, reliable & convenient

3 Product Parts

Number	Name
1	Sensor
2	(LED) light
3	Button
4	Bracket



4 Installation Instructions

4.1 Installation position

- It is recommended to install the sensor on the wall parallel to the human body movement/traffic, as shown in figure 1 or figure 2
- It is not recommended to be installed on the wall perpendicular to the human body movement, as shown in figure 3
- Do not install in a position facing windows or direct sunlight
- Do not install in a position facing an air conditioner or fan
- Areas with large obstructions in the detection area should be avoided
- The detection distance between winter and summer is different. It is recommended that the direct distance between the installation location and the detection area is less than 5 meters. The distance between the detector and the ground is between 1.5 meters and 2 meters

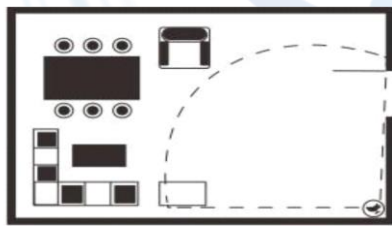


Figure 1 correct installation method 1

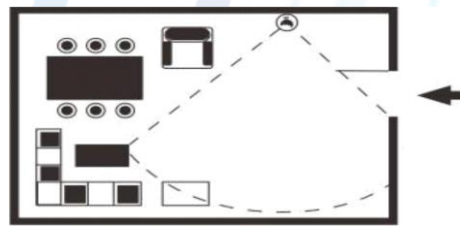


Figure 2 correct installation mode 2

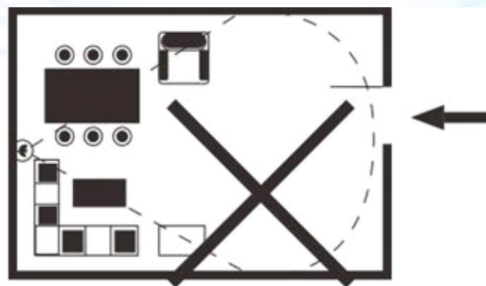


Figure 3 wrong installation

4.2 Installation method

- 1) Choose the right place to install making sure there are no hidden objects such as wires or water pipes in the wall. (the sensor may also be installed using double sided 3M tapes)
- 2) See figure 4.
 - a If fixing to concrete or masonry - According to the spacing of screw holes on the bracket, drill 2 holes with diameter of 5mm in the installation position. Insert 2 expansion gels from accessory bag into the hole.
 - b For fixing to timber or plasterboard – Screws can be set directly into surface
- 3) Fix the bracket with the 2 screws in the accessory package. Tighten the screws securely.
- 4) Hang the detector on the bracket.

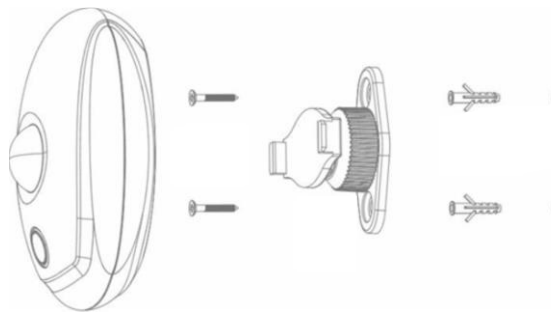


Figure 4 installation diagram

5 Setting Up with Smart Life APP

5.1 Join the Smart Life APP - Download from Google Play or The APP Store *(CLEVER LIFE APP coming soon)*



Smart Life



Clever Life

(Clever Life App coming soon)

1. Ensure the mobile device is connected to the WiFi network
2. Open the Smart Life App, then click '+' symbol in top left corner, then select 'Security & Sensor' from left side menu, now select 'Motion Detector (Wi-Fi)'. Follow the on-screen instructions to pair with network
3. Now the APP is waiting for networking. Press the detector button 3 times quickly (within 1.5 seconds), the indicator flashes 2 times in 1 second to enter pairing mode. The indicator will flash 10 times in a row indicating successful connection.

5.2 LED Status and Operation Description

- The indicator light flashes 3 times: Motion detected; the device will send notification to the APP to report the change of status. If the indicator light flashes once, this indicates no upload status
- When operating in normal state (no motion detected), every 10 minutes or so the device will send 'normal' status update to the APP.
- Smart mode networking: When the APP is waiting for networking, press the detector button 3 times quickly (within 1.5 seconds), the indicator flashes 2 times in 1 second to enter pairing mode. The indicator will flash 10 times in a row to indicate successful connection.
- AP mode networking status: press the detector button 3 times quickly (within 1.5 seconds), and the indicator light flashes once in 3 seconds. In the APP, choose the hot spot distribution network of other methods for networking

Note: when the detector is just loaded with battery, it needs to be preheated for about 20 seconds. At this time, the red indicator light flashes, during which no operation can be conducted. When one of the two networking modes fails, it will automatically switch to the other mode for networking.

6 Technical parameters

Working voltage	DC3V(AA×2)
Standby current	≤15uA
Trigger average current	250mA
Wi-Fi frequency	2.4GHz
Communication distance	≥100m @ open environment
Detection range	5 - 10m
Detection Angle	90°
Detection speed	0.3 - 3 m/s
Warm up time	20 s
Working Environment	-10~45°C, ≤95%RH (No dew)
Standards and Certification	RoHS, CE, RCM
Overall dimensions	77×58×32mm@ Mounting bracket is not included

7 Troubleshooting

Number	The fault phenomenon	Cause analysis,	Elimination method
1	When a human body passes through the detection area, the detector light will flash, but the APP state will not change	The router is not connected to a Wi-Fi wireless network	Check the Wi-Fi
		The detector is too far from the router	Adjust installation position
2	When a human body passes through the detection area, the detector light will not flash, and the APP state will not change	The detector is installed at an incorrect position or Angle	Adjust installation position or Angle
		Dead battery	Replace the battery
3	The wireless communication distance between the detector and the router is too short	Low battery	
4	After the preheating of the detector is completed, the red indicator light is always on	Product failure	Contact CLEVER LIFE to repair or replace the product

The information contained in the operating instructions is believed to be correct at the time of publication, however CLEVER LIFE shall not be responsible for the use of this document. The applications mentioned in this article are for illustration purposes only. CLEVER LIFE does not warrant or represent that these applications without further modification will be appropriate and has the right to modify the products without prior notice. For the latest information, please refer to our website www.cleverlife.com.au

Life's better when its **C L E V E R**