

Smart Wi-Fi Wall Socket

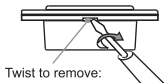


Features

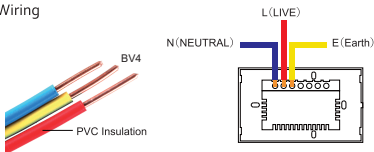
1. High quality tempered glass panel design.
2. Elegant LED On/Off indicator. On - Red, Off - Blue
3. Easy to install, fits a standard GPO mount/enclosure.
4. Monitor Socket Status.
5. Power Consumption Statistics.
5. Work with Amazon Alexa and Google Assistant.
6. Remembers On/Off state during a power outage

Installation

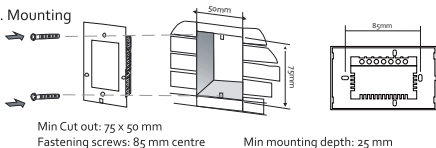
1. Open the front cover by using a small flat screwdriver



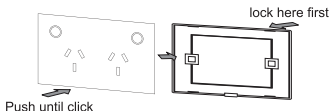
2. Wiring



3. Mounting



4. Cover the panel and connect the power.



1. Download APP

Download and Install the CleverLife Home APP



2. Connect with APP

Press any "○" button of the switch for 5 seconds.

The "○" button's LED light flickers, then release finger



Open "CleverLife Home" APP, Click 'Add Device or '+' in top right-hand corner

Then choose 'Electrician' and 'Switch (Wi-Fi)'

Follow on-screen instructions until complete

Exit learning mode

Learning mode will exit if you have no operation after 3min

Specification

Dimension: 120*72*42MM

Voltage: 110-240V AC/50~60Hz

Operating Current:10A

Warning

1. Must be Installed by Licensed Electrician.
2. Isolate power before working on circuit.
3. Please do not modify any parts of our product.

Clever Life will no be held liable for any fault or defect from unauthorized alterations to the product.

Warranty

The warranty covers defects in manufacturing that may arise as a result of the correct use of the device only. It is limited to defects in materials or workmanship and does not cover damage caused by abuse, misuse, unauthorised modification, power surge damage or extreme heat/cold or corrosive environments. The warranty also does not cover the normal wear and tear on covers, cases, housings, connectors and accessories. The warranty does not apply to any product with missing, altered or defaced serial numbers. Your product comes with a 2 year manufacturer's warranty.